

■ **Application:**

Wear Resistant Rubber Ceramic Panels is new generation composite panels, a combination of wear resistant alumina ceramic cylinders/ceramic tiles vulcanized in resilient rubber base. The alumina ceramic surface provides exceptional resistance to wear, while the elastic property of the rubber effectively dampens the impact forces which can crack the ceramics. Rubber also helps to substantially reduce the vibrations, sounds, and the impact shock generated from impacting rocks. Laid out in zigzag and brick pattern, ceramic tiles/cylinders is an excellent feature for handling large material volumes at different angles without developing a wear pattern. As excellent impact and wear resistant material. The panel is suitable for feeders, chutes, bins, transfer points, in conveyor systems, screen feed plates, mill discharge chutes, bunker etc. The major applicable industries are Coal fired power plants, cement plants, blast furnace plants and host of other industries which requires high impact abrasion resistant surfaces.

■ **Specifications of the Rubber:** Alumina Ceramic Type: **TW92®** or **TW95®** SiSiC and ZTA Ceramic bonded rubber also available.

Item		Data
Rubber	Tensile Strength	16MPa
	Break Extension	450-500%
	Shore Hardness	60±5
	Break permanent deformation	30%
	Main composition	Natural Rubber+SBR
Peel strength between rubber and ceramic/rubber and steel		6MPa
Bonding Strength between rubber and ceramic		4MPa

[**Bonding Agent**] The bonding agent imported from Germany—"Chemlok", which is best quality of bonding agent produced by LORD.

■ **Regular sizes:**

Panel Size	200×200、250×250、400×400、500×500、600×600
Ceramic size	Ceramic tiles are available from 10x 10 mm to 100 x 150 mm; thickness of ceramic tile can be from 1.5 mm to 50 mm.
Ceramic Series	TW92, TW95, ZTA Ceramic, Reaction Bonded Silicon Carbide
Alloy Steel Size	alloy steel plate with thickness ranging from 3 mm to 10 mm
Rubber Thickness	Depends upon the impact stress expected.
Remark	metal+rubber+ceramic / rubber+ceramic plain surface or spherical surface. The steel bolt also available upon requests

Remark: Other sizes are available upon request.

■ **Key benefits:**

- The combination is ideal for sliding/impact abrasions
- Installation friendly therefore reduces downtime
- Excellent sound insulation



**Tecera™ International Co.,Ltd.**

Office Add.: Room 620, Century Business Center, No.246, Liuquan Road, Zhangdian, Zibo, Shandong, China, Post Code: 255000

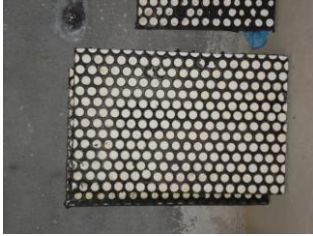
Plant Add.: Shuangyang Town, Zichuan District, Zibo City, Shandong Province, China, Post Code: 255185

Tel.: 86-533-5207913 Fax.:86-533-5207912

Web: [www.tecera.com.cn](http://www.tecera.com.cn) Email: amy@tecera.com.cn

-----  
 "No one will come to be trustful without a reason, **Tecera™** comes to be because we are always closed to the clients and the market"  
**Strive for Perfection with Burning Passion.**

## Products View



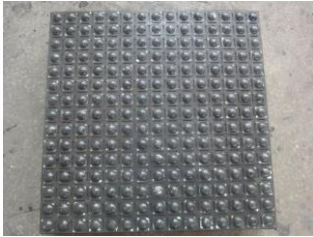
Panel With Cylinder Ceramic



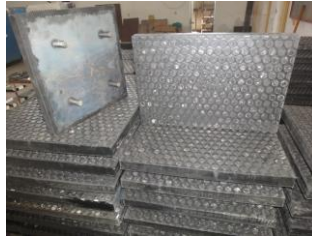
Panel With Hex. Ceramic



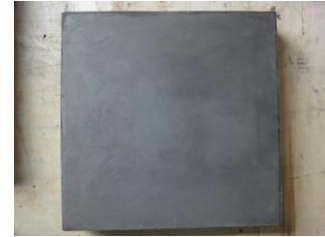
Alumina Tile bonded with Rubber



Panel With Dimple Ceramic



steel+rubber+ceramic



SiSiC bonded with rubber



**Tecera™ International Co.,Ltd.**

Office Add.: Room 620, Century Business Center, No.246, Liuquan Road, Zhangdian, Zibo, Shandong, China, Post Code: 255000

Plant Add.: Shuangyang Town, Zichuan District, Zibo City, Shandong Province, China, Post Code: 255185

Tel.: 86-533-5207913 Fax.:86-533-5207912

Web: [www.tecera.com.cn](http://www.tecera.com.cn) Email: amy@tecera.com.cn

---

*"No one will come to be trustful without a reason, Tecera™ comes to be because we are always closed to the clients and the market"*  
**Strive for Perfection with Burning Passion.**